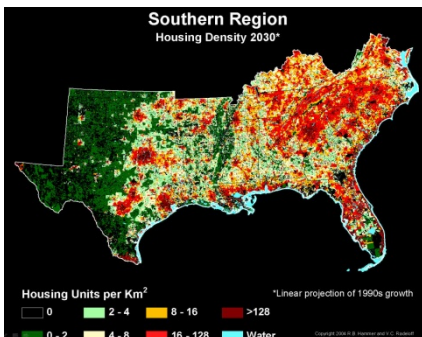
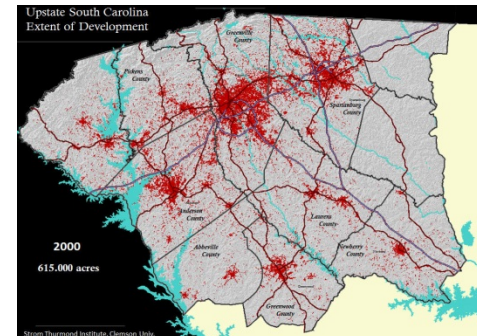


Figure 5. South Carolina's water budget.

[http://www.dnr.sc.gov/climate/sco/Education/facts/water\\_resources.pdf](http://www.dnr.sc.gov/climate/sco/Education/facts/water_resources.pdf)



SUPPOSE THAT THE STATE WATER AUTHORITY  
DETERMINES THAT THERE IS ENOUGH WATER TO  
SUPPORT 200,000 NEW UPSTATE RESIDENTS BY  
2030, WHAT DO WE DO????

MEXICAN BORDER STYLE FENCE?  
10 ACRE ZONING FOR ALL NEW CONSTRUCTION?  
STOP ISSUING NEW BUILDING PERMITS?

WE NEED TO FIGURE THIS OUT SOONER  
RATHER THAN LATER

